

## Benefits of IntelliCharge.AI:



### AI-based optimisation

IntelliCharge.AI optimises charging schedules in real-time based on electricity prices, tariffs, weather forecasts, and consumption patterns. This ensures accurate and personalized plans for maximum energy savings.



### Fully automated energy management

With version 2 of IntelliCharge.AI, fully automated energy management is introduced within just 48 hours after setup, setting a new standard for quick and effective energy optimisation.



### Savings and sustainable energy

IntelliCharge.AI reduces energy costs by up to 48%, decreases CO2 emissions by up to 30%, thereby promoting sustainable energy systems and environmental protection.



### User-friendly dashboard

IntelliCharge.AI provides access to all essential information through our user-friendly dashboard, allowing users to track AI plans, energy consumption, and CO2 savings

## Guide: Get started with IntelliCharge.AI

Ensure a smooth start with IntelliCharge.AI:

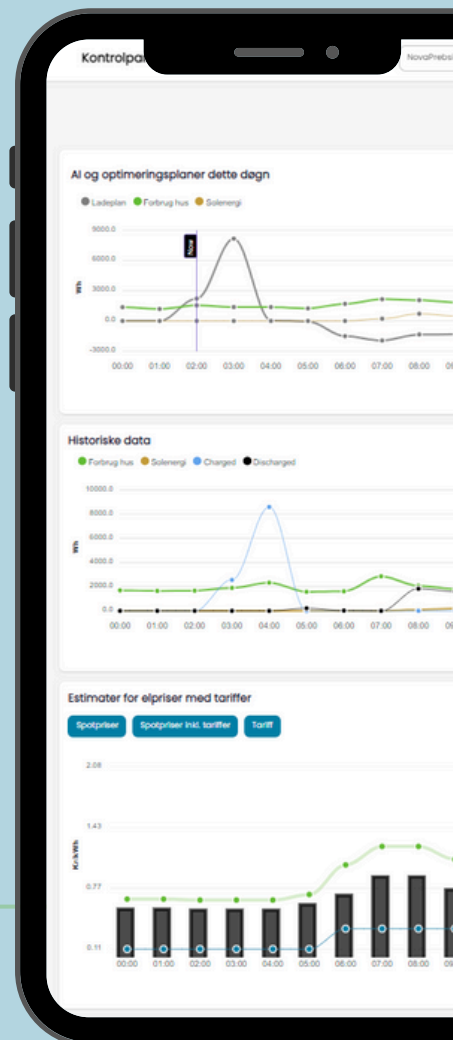
1. Create an account at the following link: [www.intellicharge.ai](http://www.intellicharge.ai) Click on 'Sign Up' (Check email inbox and click on the link to confirm user's email address).
2. Complete registration by providing the product key\*, system address, and plant information:

- Inverter model
- Inverter serial number
- Battery model
- Number of battery modules

The user now has access to IntelliCharge.AI.

\*Activation of the product key can occur during setup or later.

Use our quick guide to easily get started.



For further information, visit our website or contact us

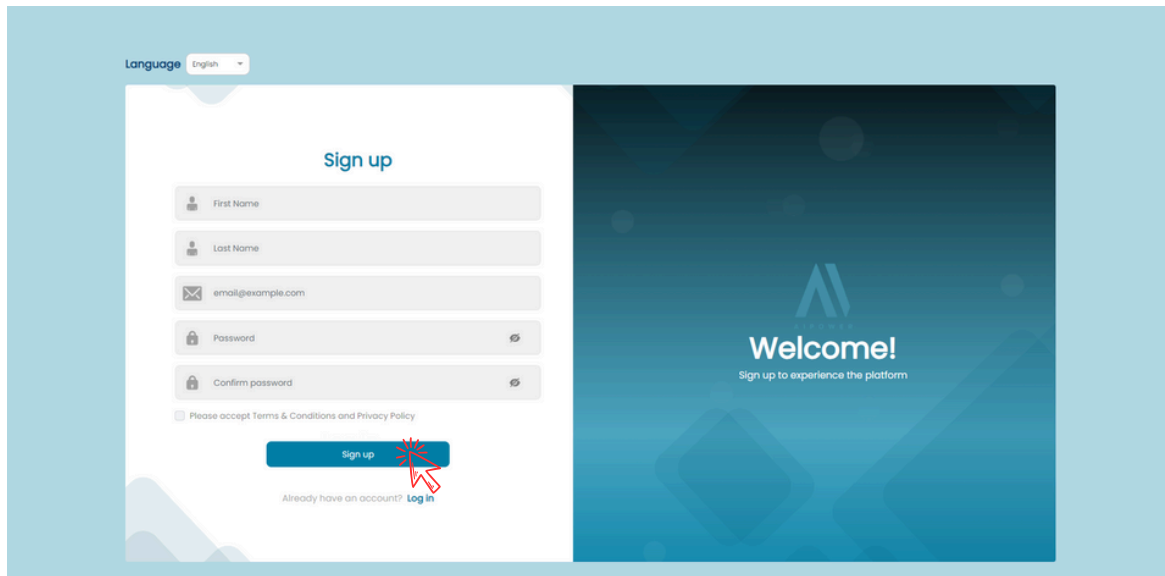
## ACCOUNT ACTIVATION

### Step 1: Begin registration

Go to [www.intellicharge.ai](http://www.intellicharge.ai) and click on 'Sign Up.'

Fill out the form with your name, email address, and choose a password.

Check the box 'Please accept Terms & Conditions and Privacy Policy' and click 'Sign Up.'"



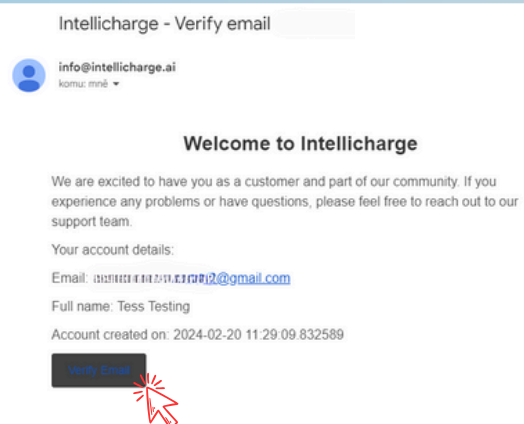
## ACCOUNT ACTIVATION

### Step 2: Verify e-mail

Check your email inbox - there should be an email from IntelliCharge.AI.

If you don't see the email, check your spam folder, or wait a few minutes.

Once you receive the email: Click the 'Verify Email' button to confirm your email address.

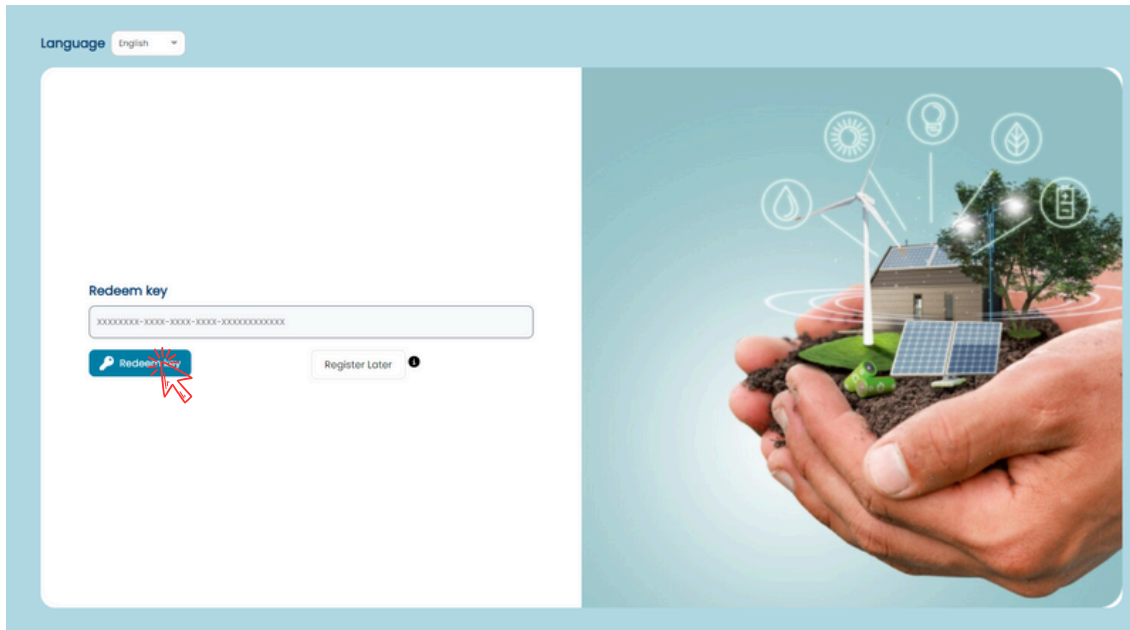


For further information, visit our website or contact us

## ACCOUNT ACTIVATION

### Step 3: Redeem product key

After validation, you will be redirected to a new page where the product key can be redeemed by pressing 'Redeem Key'.

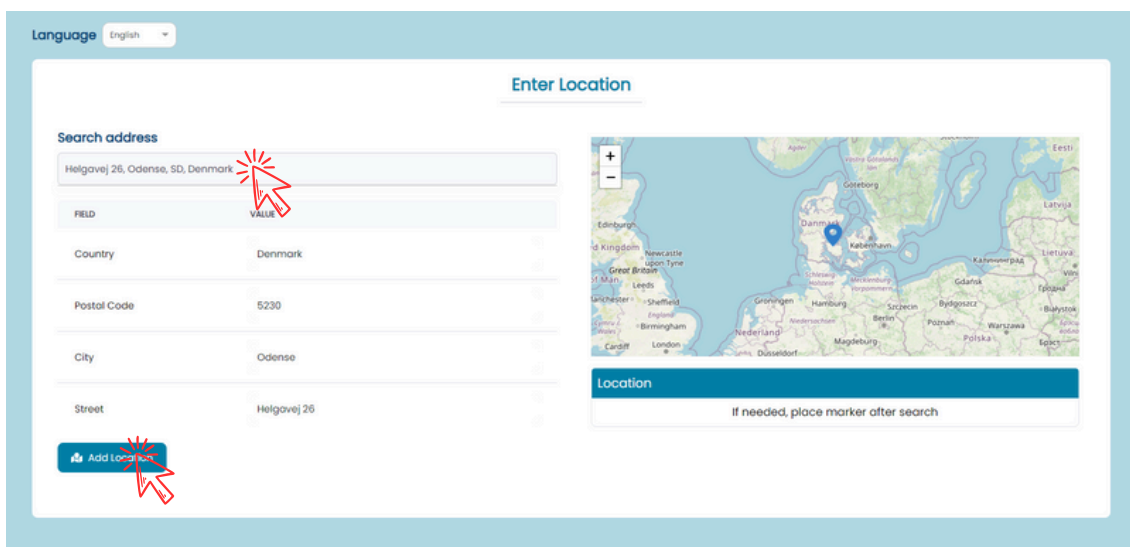


You can skip this step by clicking on 'Register Later.'  
More information about this can be found in steps 6-9.

## ACCOUNT ACTIVATION

### Step 4: Provide the system's location

Search for the address and confirm by pressing 'Add Location'. If there are issues, click and select directly on the map.

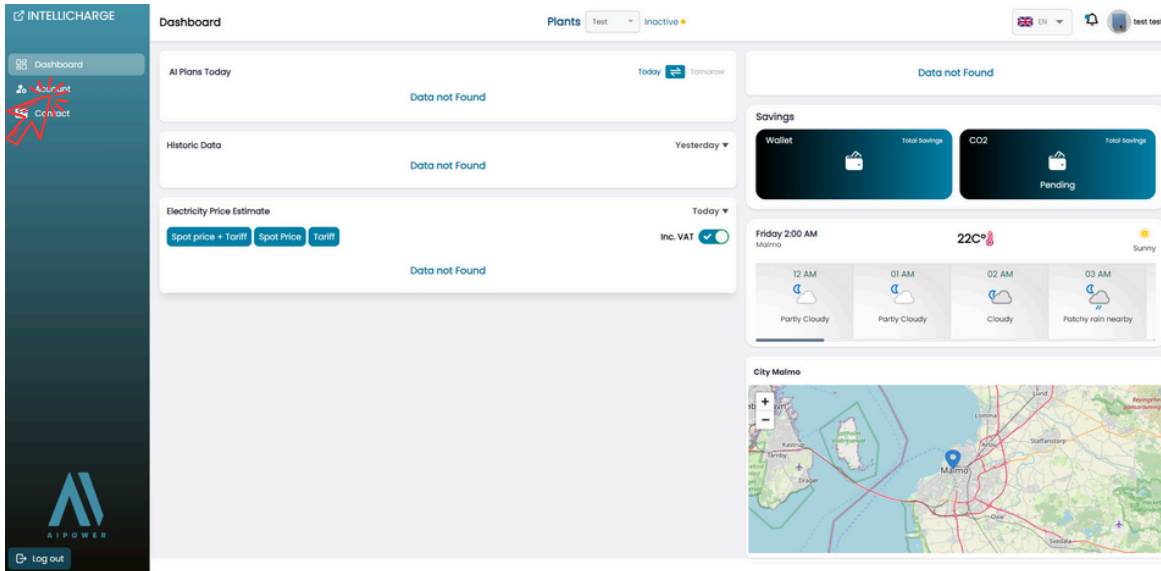


For further information, visit our website or contact us



## PRODUCT KEY ACTIVATION

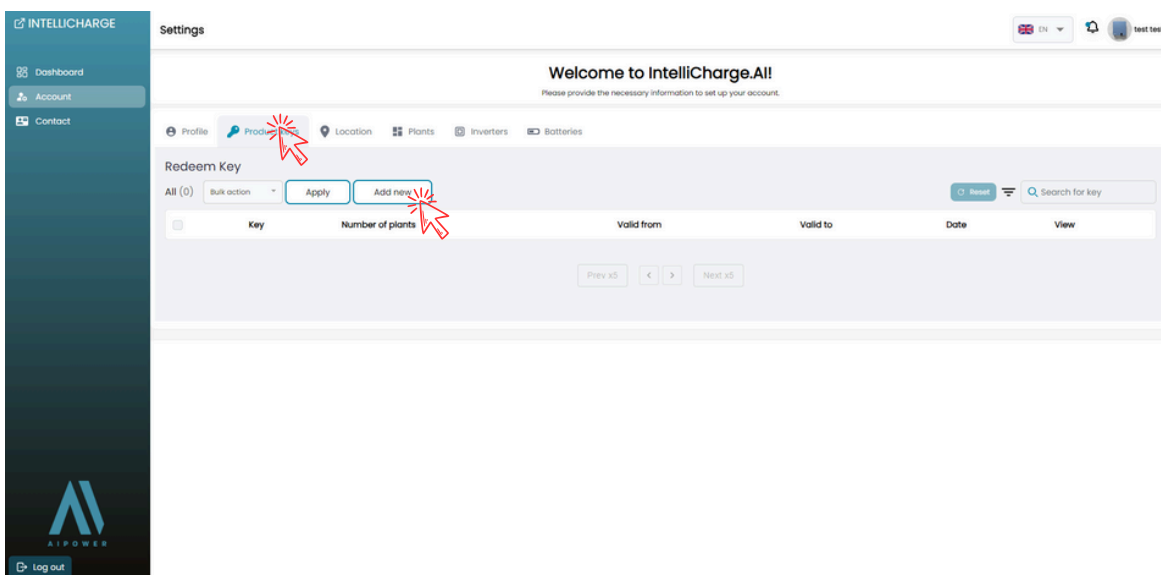
Step 6: Go to 'Account' section



## PRODUCT KEY ACTIVATION

Step 7: Activate the product key in the 'Product keys' section

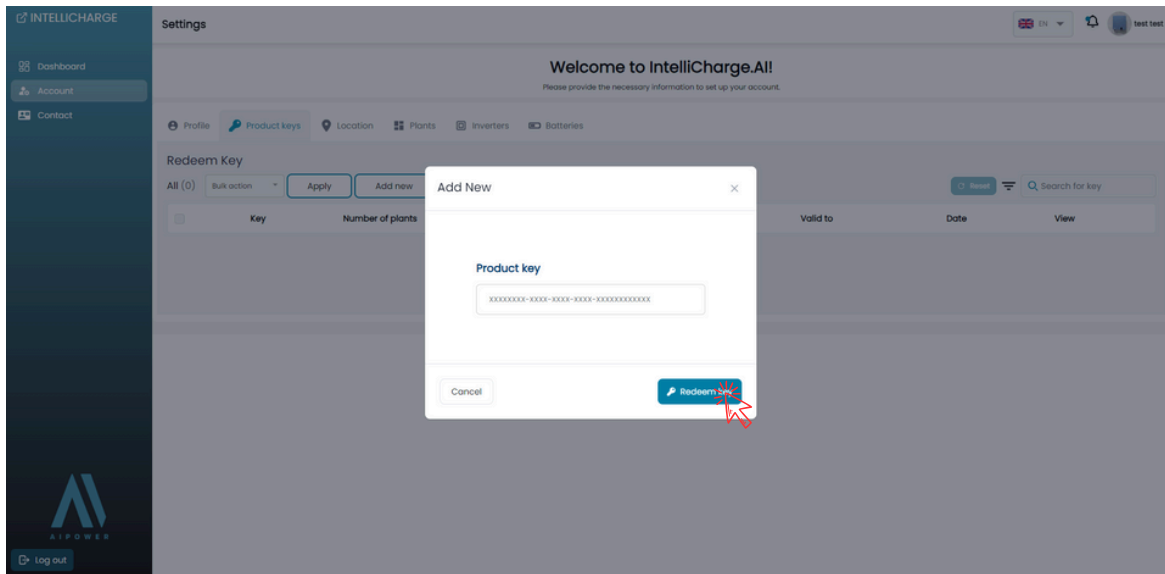
In Account Settings, you can activate product keys among other things. First, click on 'Product keys', and then on 'Add New.'



## PRODUCT KEY ACTIVATION

### Step 8: Enter the product key

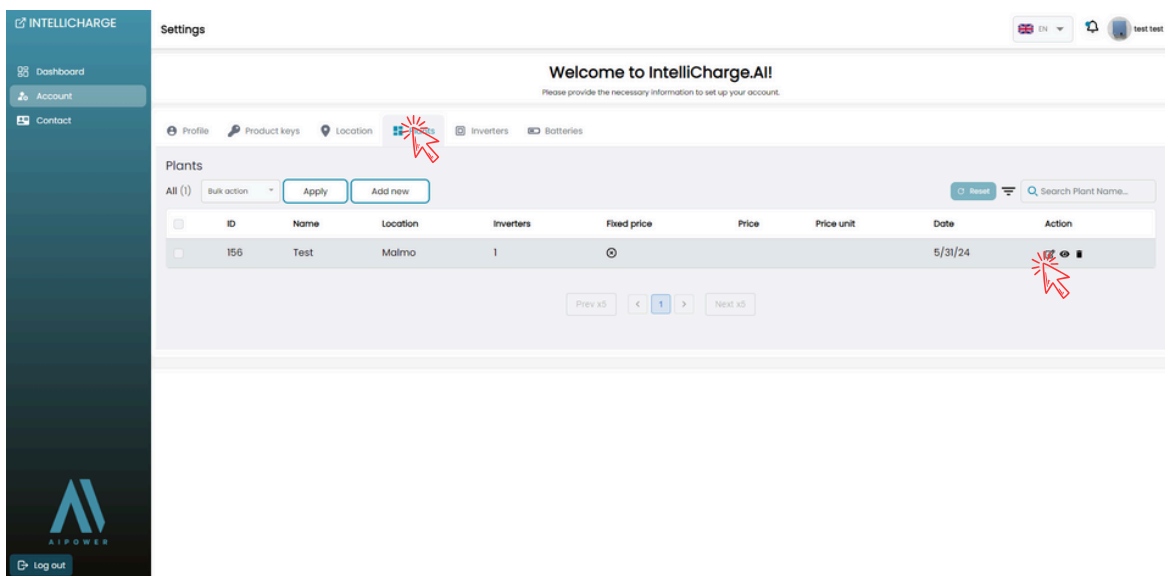
Now insert the product key and press 'Redeem Key.'



## PRODUCT KEY ACTIVATION

### Trin 9: Edit plant

Go to 'Plants' and press 'Edit' under 'Action.'

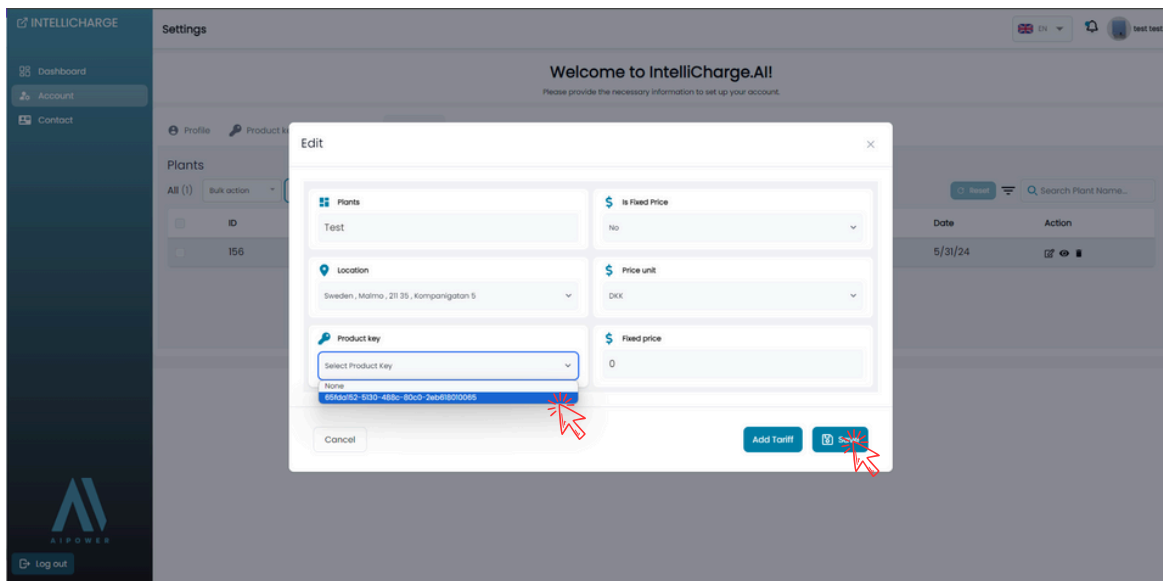


For further information, visit our website or contact us

## PRODUCT KEY ACTIVATION

### Step 10: Add product key to the system

Select your product key from the dropdown menu and confirm by pressing 'Save.'



**The product key is now activated!**

## ACTIVATION OF SOLAR PANEL SYSTEM

### Step 11: IntelliCharge.AI requests access to the solar system

There's nothing more for you to do except wait.

We will contact Solplanet to request access to the system.

This step is essential for us to start analysing your data and optimising your energy consumption.

Please note that it may take up to a week after your account is activated before we can manage charging plans.

Until we establish the connection, you will only see estimates for electricity prices with tariffs on the dashboard on the home screen.

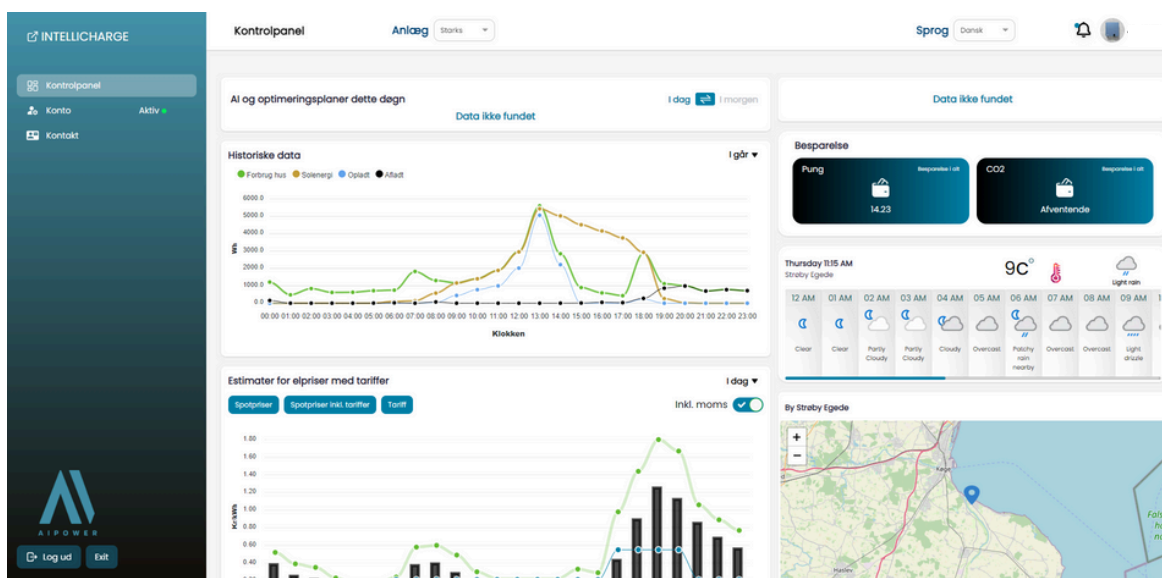
For further information, visit our website or contact us

## ACTIVATION OF SOLAR PANEL SYSTEM

### Step 12: Connection to the system established

Once we establish a connection to the system, our system begins collecting and analysing historical data on battery charging, household energy consumption, and solar energy production data.

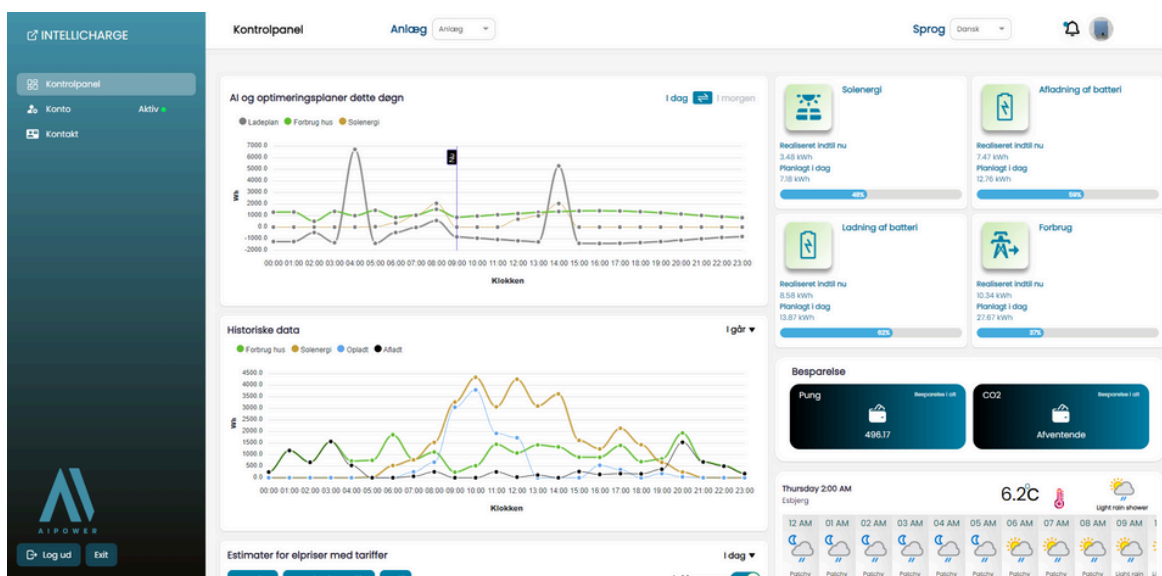
As soon as this occurs, you will be able to view historical data on the control panel website. However, it may still take a day or two before we begin managing the system



## ACTIVATION OF SOLAR PANEL SYSTEM

### Step 13: AI takes over

When our system has had sufficient time to understand the plants's needs, it will start generating AI plans using historical data along with price and weather forecasts.





# IntelliCharge.AI



Our system continues to learn and improve its decisions as it gathers more data.  
This means that you may experience some instances of non-ideal behavior in the first few days.

We are always here to support you and answer your questions.  
Feel free to contact us at [info@intellicharge.ai](mailto:info@intellicharge.ai) if you cannot find answers to your questions on our FAQ page.

**We look forward to assisting you in achieving  
savings on your energy costs.**

For further information, visit our website or contact us

 Trekanten 16, 4200  
Slagelse, Danmark

 [info@intellicharge.ai](mailto:info@intellicharge.ai)  
 [www.intellicharge.ai](http://www.intellicharge.ai)

 + 45 26 25 82 22

Last updated on 31.05.2024